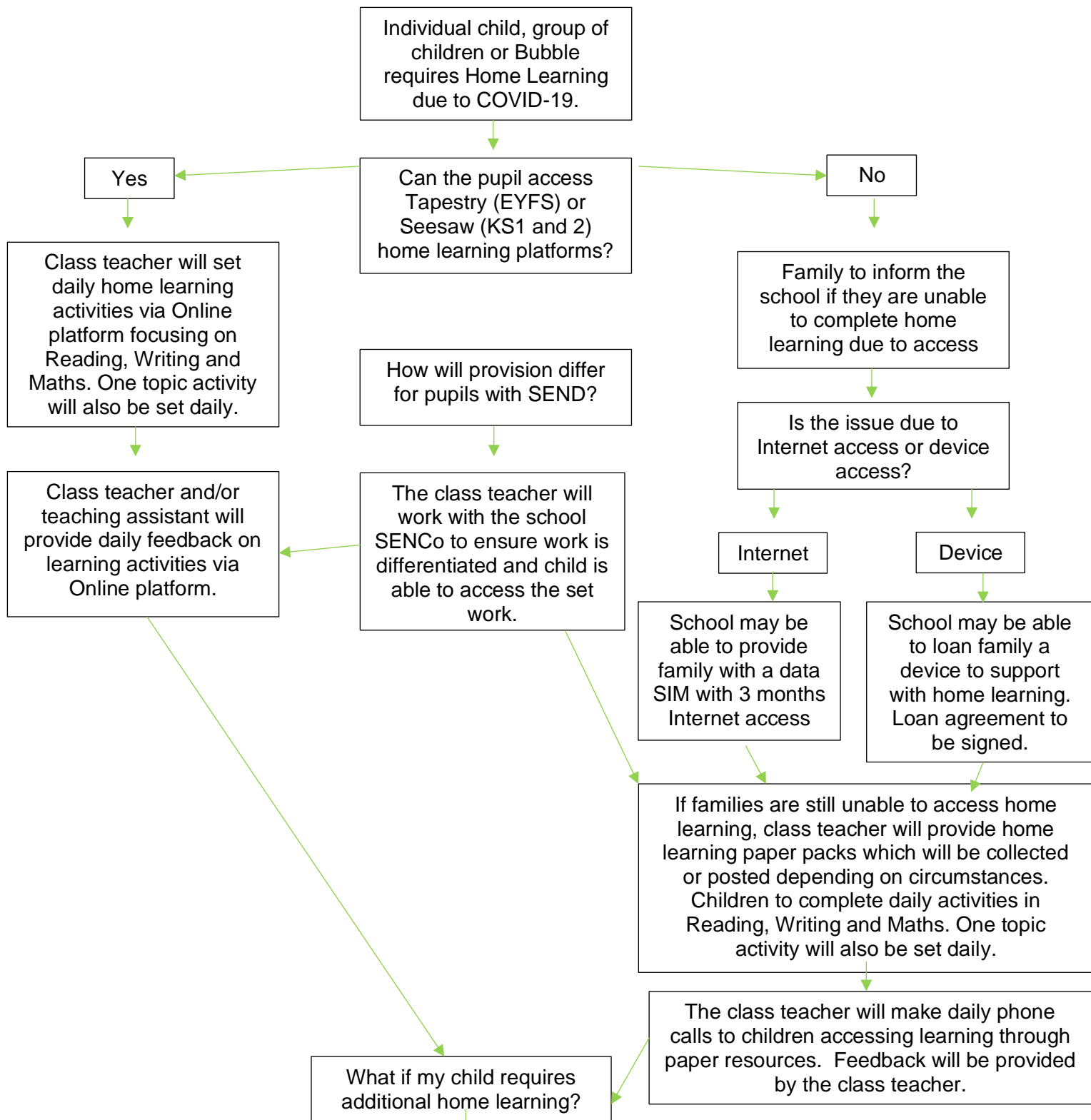


Lime Academy Abbotsmede - Access to remote learning



Children can access further home learning and additional resources via the School website and can access lessons via Oak national Academy Online Learning Platform.

<http://limeacademyabbotsmede.org/pupil-zone/home-learning-zone/>

https://www.thenational.academy/?gclid=EAlaIQobChMIuqj498367QIV2u3tCh2Bsw0uEAAYASAAEgJR8_D_BwE

Responsibilities for home learning

Teachers to provide home learning via the Online learning platforms focusing daily on Reading, Writing and Maths, along with one daily topic activity.



Teachers and support staff to monitor pupils that are not accessing home learning and make daily phone calls home. HLTAs to provide support in the bubbles they work in.



Teachers and support staff to follow the 'access to remote learning' flow chart to identify reasons why pupils have barriers to accessing remote learning. These issues are reported to SLT who, with the support of the office and IT staff, will help provide the necessary support.



If technology cannot be provided in a timely manner, teachers will provide paper resources for the pupils. These can be sent to office staff for printing and can be posted/delivered to families. Teachers must make daily phone calls to those children that are accessing learning through paper-based resources.



Head of years to monitor Online learning and support teachers and support staff where needed.



Staff to give weekly feedback to SLT on remote learning.